

Read Me Before Polishing!

Necessary Prep Work:

- The level of success achievable with Pro Perfect is dependent on the prep and sanding prior to applying the compound.
- For best results, please use recommended pads, dual-action orbital sander, and follow all directions.

Everything You'll Ever Need:

- Pro Perfect Epoxy Polish
- Dual-Action Orbital Sander
- Recommended Sanding Pads
- Personal Protective Equipment
- Epoxy That Needs Polishing!

Your Ideal Work Environment:

- 65-75°F
- Clean and Dry
- Low Humidity
- A Great Attitude!

Check out our other products!



If you have any questions, contact us for assistance. We are happy to help!

1458 35th Street
Galesburg, MI 49503
183-EPOXY-PRO or
1-833-769-9776

www.promarinesupplies.com
support@promarinesupplies.com



Product video & Information

ProMarine
supplies

PRO PERFECT

Epoxy Polishing Kit

Please read me before starting your project!

Pro Perfect is recommended for use on epoxy river tables, cutting boards, jewelry casts, resin art, and more!

Complies with FDA CFR 175.300 when properly applied and removed. Once Pro Perfect is dry and has been removed, wash your piece with dish detergent and dry before use.

The level of success achievable with polish is dependent on preparation and sanding prior to applying the compound. Projects should be thoroughly sanded with a fine-grit pad (up to 4,000 grit) prior to polish application.

Sanding Preparations

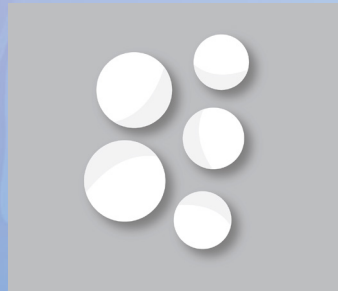
1. The more imperfections (i.e., divots, scratches) your project has, the lower sanding grit you should begin with. We recommend sanding through grits 120, 220, 320, 400 and 600 in step #1. Remove any dust and debris between grits with a soft microfiber cloth. Be sure to sand the top, sides, and rounded edges of your project. When sanding rounded edges of a table, do so by hand. Sand your project vertically, then horizontally.

2. Switch to your fine-grit discs and work from 500-grit to 1,000, 2,000, 3,000,

and 4,000-grit. Remove any dust and debris between grits with a soft microfiber cloth. Be sure to sand the top, sides, and rounded edges of your project. When sanding rounded edges of a table, do so by hand. Sand your project vertically, then horizontally.

Polishing Your Project

1. Prep your polishing surface with 4-6 dots of polish. Prep your buffing pad with 4-6 dots of polish to make sure it is dampened.

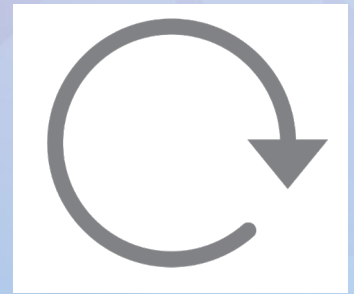


2. Using steady, circular motions, polish your project in small 2-foot sections. Excessive speed and pressure can create heat and smear the epoxy. For best results, keep speed and pressure to a minimum.



3. Using a soft microfiber cloth, remove the compound from your polished area.

4. Continue to a new area and repeat steps 2 and 3 until satisfied with your finish.



5. Thoroughly wipe away all leftover streaks with a clean microfiber cloth.



**Like our product?
Leave us a review!**